

Totalizers mechanic

Meter counter

Display 6-digits, reset by key

M 300



M 300 - Meter counter

Features

- Meter counter
- Adding
- Display 6-digits
- Reset by key

Technical data - mechanical design

Function	Meter counter
Display	White numbers on black Decimal digits in red
Number of digits	6-digits
Digit height	4.5 mm
Zero setting	Key reset by detachable key either at left or right shaft.
Count mode	Adding in a rotational direction to be indicated, subtracting in reverse direction. 5 revs. = 10 counts
Drive shaft	Both sides, $\varnothing 4$ mm
Measuring speed	<100 m/min (measuring wheel)
Measuring accuracy	1 dm
Measuring range	99 999.9 m
Ambient temperature	0...+60 °C
Housing type	Surface mount housing with mounting plate
Housing colour	Grey
Dimensions W x H x L	69 x 48 x 28 mm
Dimensions mounting plate	60 x 70 mm
Mounting type	Base plate, 6 long mounting holes
Weight approx.	130 g
Materials	Housing: Hostaform POM, grey Base plate: steel zinc-coated

Totalizers mechanic

Meter counter

Display 6-digits, reset by key

M 300

Part number

M 300. 010 A 06

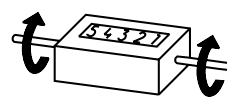
010 Zero setting
 With detachable key
 A Housing
 Surface mount housing, grey
 06 Count mode / drive
 5 revolutions = 10 digits =
 1.0 m / drive shaft on both sides
 C Display / direction of rotation
 6-digits 99 999.9 / I
 D 6-digits 99 999.9 / II

Accessories

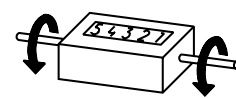
Measuring wheels

MR211.04A	Circumf. 20 cm, knurled aluminium
MR241.04D	Circumf. 20 cm, smooth Hytrel TPE-E
MR261.04A	Circumf. 20 cm, knopped rubber NBR Nitril
MR291.04D	Circumf. 20 cm, grooved Hytrel TPE-E

Direction of strokes and rotation

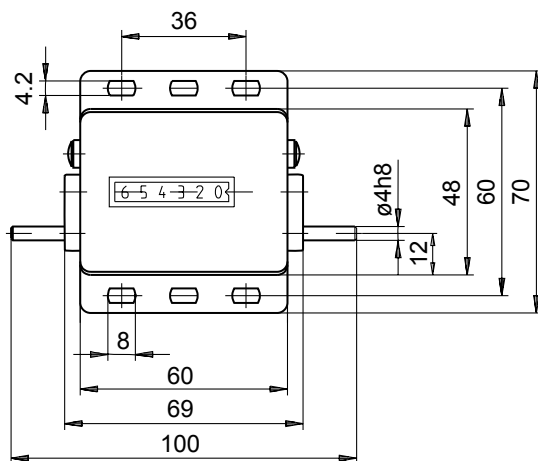


Away from user
 Direction of rotation or
 stroke direction I



Toward user
 Direction of rotation or
 stroke direction II

Dimensions



Reset shaft for
 detachable key

