

Totalizers mechanic

Stroke counter

Display 7-digits, reset by key

H 400



H 400 - Stroke counter

Features

- Stroke counter
- Adding
- Display 7-digits
- Reset by key

Technical data - mechanical design

Function	Stroke counter
Display	White numbers on black
Number of digits	7-digits
Digit height	7 mm
Zero setting	Key reset by detachable key either at left or right shaft.
Count mode	Adding in a stroke direction to be indicated. 1 stroke = 1 count
Drive shaft	Both sides, $\varnothing 7$ mm
Stroke	$>38^\circ$ to $<60^\circ$
Stroke lever	To be positioned on shaft at will. Stroke lever relocates automatically to start position.
Stroke frequency	≤ 500 strokes/min
Measuring range	9 999 999
Ambient temperature	0...+60 °C
Housing type	Surface mount housing with mounting plate
Housing colour	Grey
Dimensions W x H x L	106 x 64 x 45 mm
Dimensions mounting plate	120 x 64 mm
Mounting type	Base plate, 4 long mounting holes
Weight approx.	350 g
Materials	Housing: Hostaform POM, grey Base plate: steel zinc-coated

Totalizers mechanic

Stroke counter

Display 7-digits, reset by key

H 400

Part number

H 400.010 **A** **02**

Display / direction of stroke

- A 7-digits 9 999 999 / I
- B 7-digits 9 999 999 / II

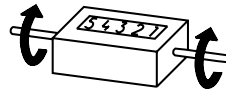
Count mode / drive

- 02 1 stroke = 1 digit / drive shaft on both sides

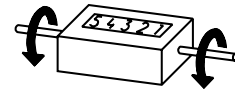
Housing

- A Surface mount housing, grey

Direction of strokes and rotation

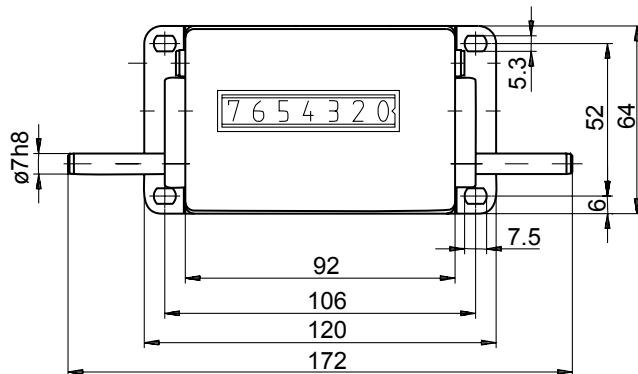


Away from user
Direction of rotation or stroke direction I

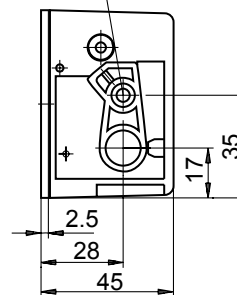


Towards user
Direction of rotation or stroke direction II

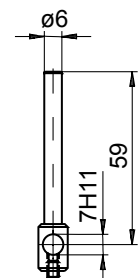
Dimensions



Reset shaft for detachable key



Stroke lever



Stroke

